



Platform Overview

Accelerate learning growth for all students with Achieve3000 Literacy's differentiated content and instruction. It is proven to double and even triple expected reading gains in a single school year.

Differentiate

Differentiated instruction is the process of adapting instruction to meet the needs of each individual student. It starts with getting to know your students, their interests, and abilities. It ends with watching them engage, learn, and grow.

Engage

Research has shown a strong correlation between student engagement and student achievement. One Gallup study found that engagement was "significantly related to academic achievement progress in math, reading, and all subjects combined."

Accelerate

Accelerated literacy growth occurs when a student's actual growth exceeds what is expected based on their current reading level and the length of time they engage in instruction. It's more important than ever for all students to catch-up.

Achieve

Success for every student can be realized with a systematic and flexible approach to measuring growth, forecasting performance, targeting instruction, and creating a culture of literacy that celebrates and supports every student.

Students cannot learn or grow unless they are fully engaged. That's why we continue to upgrade Achieve3000 Literacy every year. We also continue to add timely, culturally relevant content to ensure that the lessons reflect the diverse population we serve.

A Powerful Lesson Interface

The lesson interface offers greater accessibility to students at all levels. The lessons provide more opportunities for learning at every stage, with embedded videos and expanded audio content, as well as:

- Opportunities for skills practice
- Thoughtful, inspiring writing prompts
- Social-emotional learning prompts

Dynamic Features & Routine

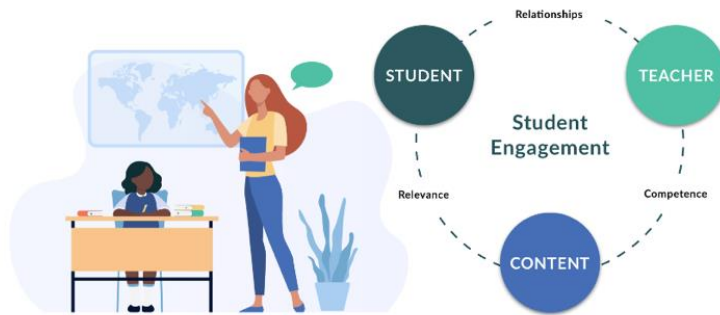
We're always looking for ways to make our lessons more rigorous and our learning routine more intuitive. For example...

- A lesson progress bar keeps students focused on the task at hand and lets them move efficiently through lesson steps
- A split-screen design offers a resizable reading pane, so students can easily refer to the content during each lesson step
- Teachers have been given greater control of their students' learning routine, including the ability to gate lesson steps

A Growing Content Collection

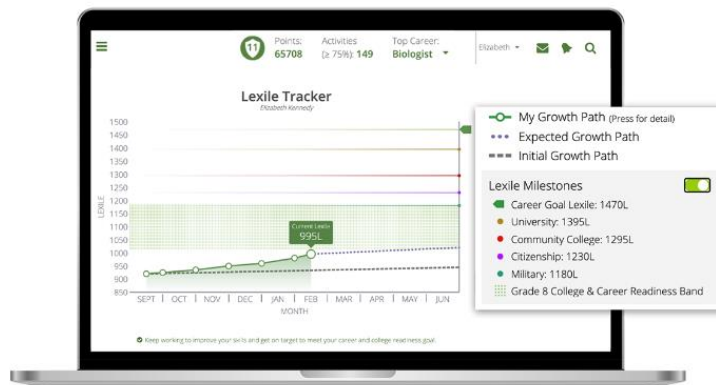
The content is constantly changing. Some of the most exciting recent updates include:

- *Creating Connections* collections for U.S. and World History for grades 6-10 augment your core social studies curriculum
- *Ask a Scientist* series allows elementary students to get their science questions answered
- *Content Crosswalks* help teachers build collections that include Actively Learn content



Students, teachers and leaders can share insights to engage and motivate students with a common understanding of their individualized goals, clear progress monitoring, and opportunities to celebrate their achievement throughout the year.

| | | |
|----------------------------------------------------------------------------------------------------------------------------------------------------------------------------------------------------------------------|-------------------------------------------------------------------------------------------------------------------------------------------------------------------------------------------------------------------------------------------------------------------|--------------------------------------------------------------------------------------------------------------------------------------------------------------------------------------------------------------------------------------------|
| <p>Inspire Growth</p> <p>Create a culture of literacy as students, teachers, leaders, and parents track and celebrate reading growth with the Lexile Framework for Reading and weekly sponsored contests.</p> | <p>Monitor Progress</p> <p>The Data Center makes it easy for teachers and administrators to track student progress with powerful tools, ranging from easy-to-read dashboards, to performance and usage reports, to new metrics, controls, and filters.</p> | <p>Personalize Instruction</p> <p>Students can explore their interests, identify future goals, track their progress, and stay motivated to keep learning with the Career Center and the Student Lexile Tracker.</p> |
|----------------------------------------------------------------------------------------------------------------------------------------------------------------------------------------------------------------------|-------------------------------------------------------------------------------------------------------------------------------------------------------------------------------------------------------------------------------------------------------------------|--------------------------------------------------------------------------------------------------------------------------------------------------------------------------------------------------------------------------------------------|



Students who attain a reading measure of 1300L by the end of high school are considered to have proficient reading ability to be successful in life after graduation. College and career readiness reports help track students' growth year after year.

